

Spare Parts

MAINERO

📍 Ruta Nac. N° 9 / Km 502 / Bell Ville / Córdoba / Argentina / www.mainero.com.ar

CORN HEADER

MODEL MDD-100

March, 2017 | Serie 1 and Post. | 34231-782

MDD-100 - 20"



MAINERO

INSTRUCTIONS ON HOW TO ORDER SPARE PARTS

To make delivery easier and to avoid confusions or delays, we recommend to order as follows:

- a - Parts quantity.
- b - Part type or name.
- c - Part number.
- d - Machine serial number.
- e - Machine number.

All right or left reference is considered HEADER from watching the BACK and FORWARD direction (at work).

MAINERO appreciates the trust placed by you on our production machines and renews its commitment to improved performance and operational safety of the same.

The design of the machine you purchased, follows the philosophy MAINERO industrial, renovation and improvement.

In order to increase the performance of this machine before operating it, we recommend a careful reading of the Operator's Manual.

You will find a guide for safe and efficient operation under different conditions, for maintenance, for the transfer of equipment and indications and warnings concerning the personal safety of the operator, third and care of the environment.

The Operator's Manual complements the training received during the delivery of the machine if you need any additional information, you can request phone 0800 444 0999

The spare parts catalog contains detailed information and ordered the components on your machine.

However, due to the policy of continuous product improvement, reserves the right MAINERO to make changes without incurring any obligation on products previously manufactured.

For that reason, the contents of this catalog, is updated to the date of entry into print, and can therefore be changed without notice.

You can contact us in the following ways:

CARLOS MAINERO y CIA SAICFI
Rivadavia 259 / 2550 Bell Ville / Córdoba / Argentina
Phone: +54 9 3537 424021 / 022 / 023
e-mail: info@mainero.com.ar
website: www.mainero.com.ar

Content

| | |
|---|----|
| ILLUSTRATION N° 1: CHASSIS AND EAVES | 65 |
| ILLUSTRATION N° 2: COVERS | 67 |
| ILLUSTRATION N° 3: COMBINED RECOLECTOR | 69 |
| ILLUSTRATION N° 4: ROLLER WITH BLADES | 71 |
| ILLUSTRATION N° 5: GEAR BOX AND DISK CLUTCH | 73 |
| ILLUSTRATION N° 6: CENTRAL POINT AND HOOD | 75 |
| ILLUSTRATION N° 7: SIDE POINT AND HOOD | 77 |
| ILLUSTRATION N° 8: SIDE POINT | 79 |
| ILLUSTRATION N° 9: SIDE DRIVE | 81 |
| ILLUSTRATION N° 10: AUGER | 83 |
| ILLUSTRATION N° 11: MAIN SHAFT | 85 |
| ILLUSTRATION N° 12: HYDRAULIC CIRCUIT | 87 |
| ILLUSTRATION N° 13: STICKERS | 89 |

SPARE PARTS LISTING OF THE ILLUSTRATION N° 1

| POS. | DENOMINATION | SPARE N° | POS. | DENOMINATION | SPARE N° |
|------|-----------------------------|-----------|------|--------------|----------|
| 1 | Hex. bolt RM 8 x 16 mm | 21705-337 | | | |
| 2 | Pressure washer Ø 8 mm | 20814-108 | | | |
| 3 | Right cover controls | 48701-277 | | | |
| 4 | Chassis 12 rows | 48701-282 | | | |
| | Chassis 14 rows | 48701-291 | | | |
| | Chassis 16 rows | 48701-289 | | | |
| | Chassis 18 rows | 48701-287 | | | |
| | Chassis 20 rows | 48701-290 | | | |
| 5 | Plain washer Ø 5/16" | 20801-103 | | | |
| 6 | Feed opening protection | 48700-573 | | | |
| 7 | Self lock hex nut RM 6 mm | 27963-104 | | | |
| 8 | Self lock hex nut RM 8 mm | 27963-106 | | | |
| 9 | RH support feed inlet cover | 48701-270 | | | |
| 10 | Hex. bolt RM 16 x 35 mm | 21705-479 | | | |
| 11 | LH support feed inlet cover | 48701-269 | | | |
| 12 | RH SN bolt RM 8 x 16 mm | 21409-302 | | | |
| 13 | Pressure washer Ø 16 mm | 20814-112 | | | |
| 14 | Support plate | 48700-576 | | | |
| 15 | RH SN bolt RM 6 x 20 mm | 21409-260 | | | |
| 16 | Left cover controls | 48701-277 | | | |
| 17 | Clip pin | 22300-102 | | | |
| 18 | Pin | 48700-508 | | | |
| 19 | Cotter pin 4 x 30 mm | 25102-188 | | | |
| 20 | Hook | 48700-209 | | | |
| | | | | | |
| | | | | | |
| | | | | | |
| | | | | | |
| | | | | | |
| | | | | | |
| | | | | | |
| | | | | | |
| | | | | | |
| | | | | | |
| | | | | | |
| | | | | | |
| | | | | | |
| | | | | | |
| | | | | | |
| | | | | | |

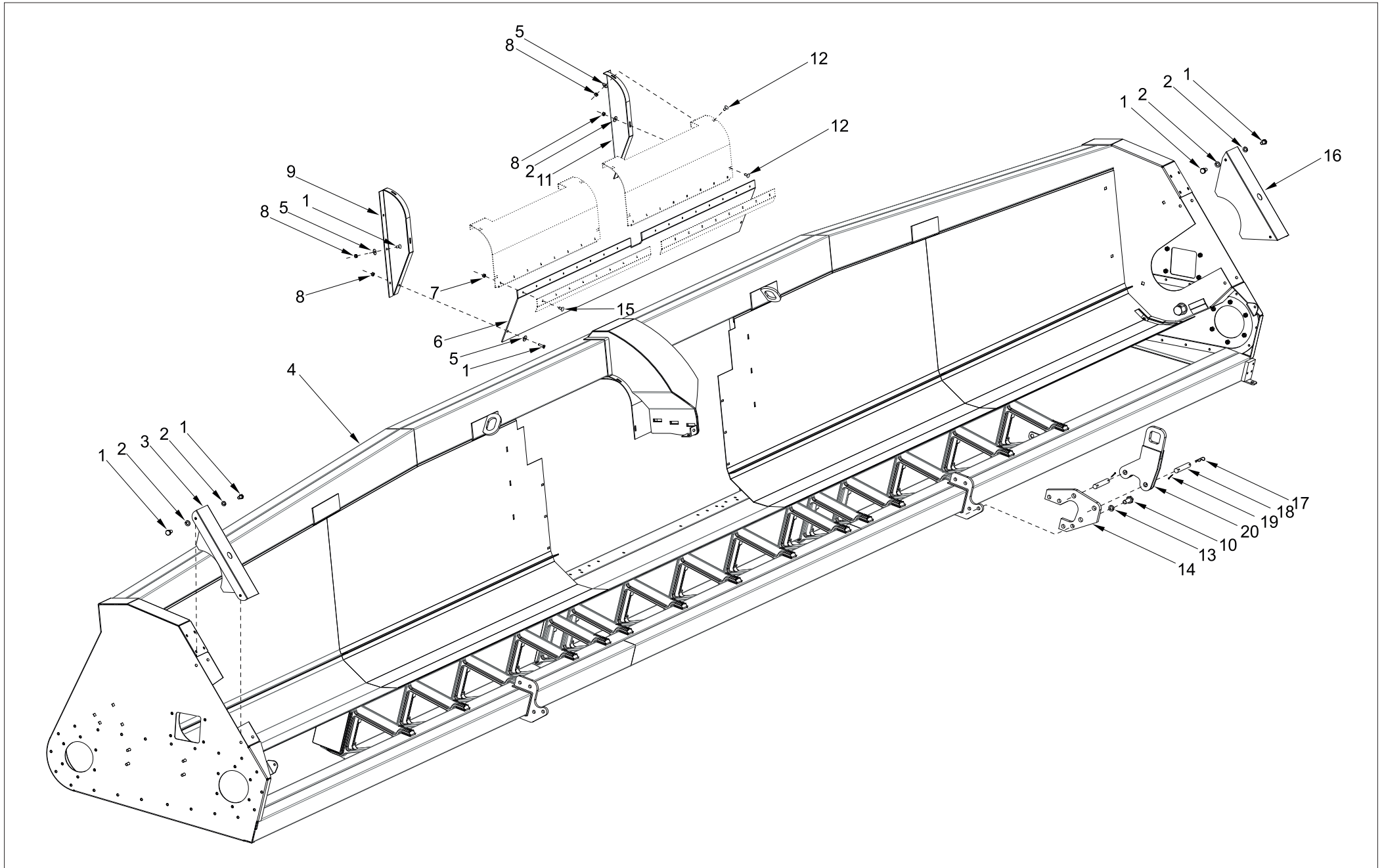


ILLUSTRATION N° 1: CHASSIS AND EAVES

SPARE PARTS LISTING OF THE ILLUSTRATION N° 2

| POS. | DENOMINATION | SPARE N° | POS. | DENOMINATION | SPARE N° |
|-------------|--|-----------------|-------------|---------------------|-----------------|
| 1 | RH lower side auger cover - 12 rows | 48800-710 | | | |
| | RH lower side auger cover - 14 rows | 48800-796 | | | |
| | RH lower side auger cover - 16 rows | 48800-778 | | | |
| | RH lower side auger cover - 18 rows | 48800-762 | | | |
| | RH lower side auger cover - 20 rows | 48800-786 | | | |
| 2 | RH lower central auger cover - 16 rows | 48702-748 | | | |
| | RH lower central auger cover - 18 rows | 48702-898 | | | |
| | RH lower central auger cover - 20 rows | 48702-898 | | | |
| 3 | LH lower central auger cover - 16 rows | 48702-749 | | | |
| | LH lower central auger cover - 18 rows | 48702-897 | | | |
| | LH lower central auger cover - 20 rows | 48702-897 | | | |
| 4 | LH lower side auger cover - 12 rows | 48800-711 | | | |
| | LH lower side auger cover - 14 rows | 48800-795 | | | |
| | LH lower side auger cover - 16 rows | 48800-777 | | | |
| | LH lower side auger cover - 18 rows | 48800-761 | | | |
| | LH lower side auger cover - 20 rows | 48800-785 | | | |
| | | | | | |
| | | | | | |
| | | | | | |
| | | | | | |
| | | | | | |
| | | | | | |
| | | | | | |
| | | | | | |
| | | | | | |
| | | | | | |
| | | | | | |
| | | | | | |
| | | | | | |
| | | | | | |
| | | | | | |
| | | | | | |
| | | | | | |
| | | | | | |
| | | | | | |

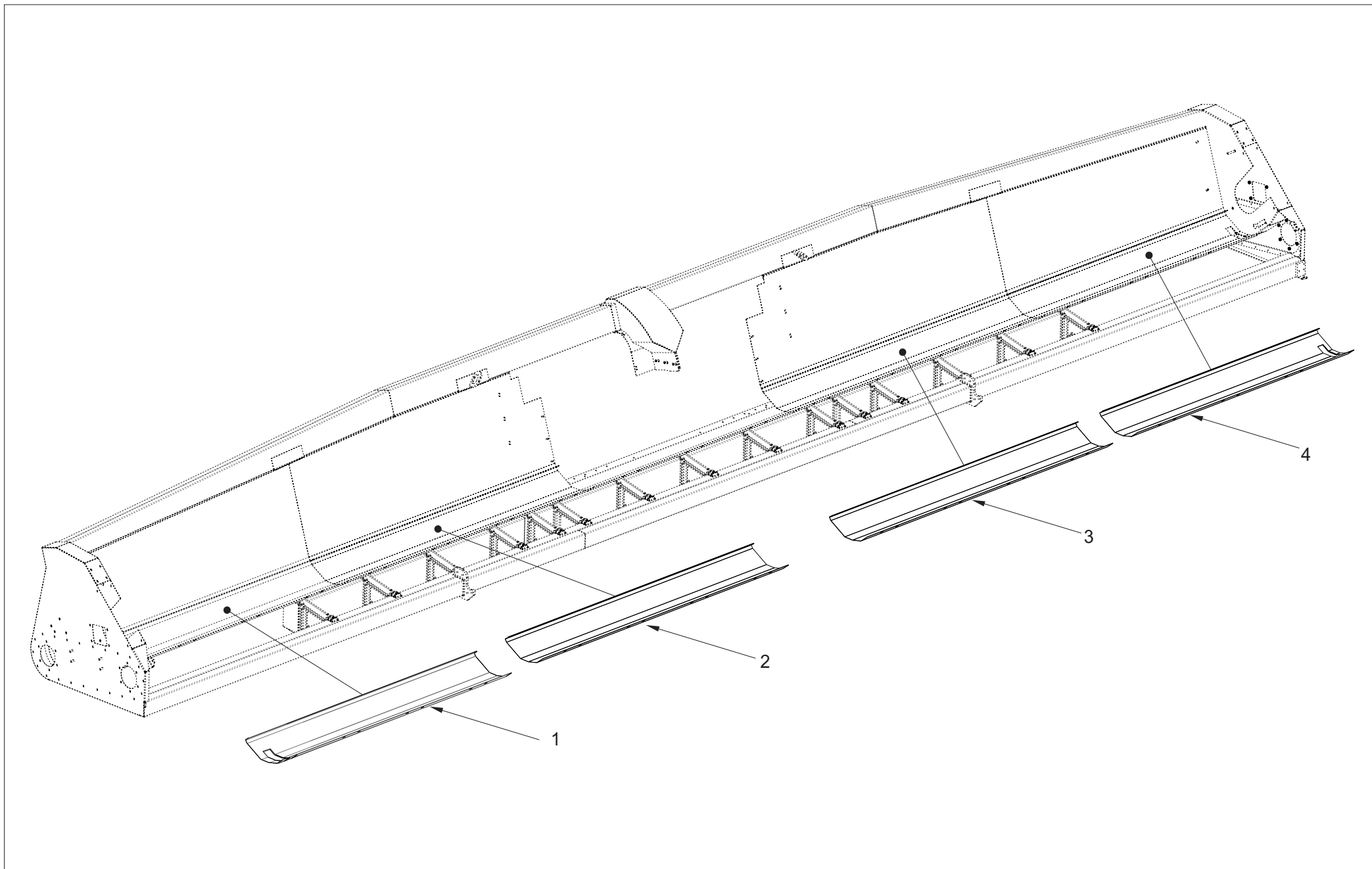


ILLUSTRATION N° 2: COVERS

SPARE PARTS LISTING OF THE ILLUSTRATION N° 3

| POS. | DENOMINATION | SPARE N° | POS. | DENOMINATION | SPARE N° |
|------|--|-----------|------|--|-----------|
| 1 | Hex. bolt RM 12 x 25 mm. | 21705-405 | 34 | RH snap plate | 48837-222 |
| 2 | Rock arm for snap plate | 48737-272 | 35 | Hex. bolt RM 12 x 30 mm. | 21705-407 |
| 3 | Self lock hex nut RM 10 mm. | 27963-107 | 36 | Supplement | 48736-530 |
| 4 | Plain washer Ø 3/8" | 20800-104 | | | |
| 5 | RH SN bolt 10 x 22 mm. | 21409-327 | | | |
| 6 | Allen countersink head screw RM 10 x 26 mm | 27119-239 | 37 | Complete furrow set (composed of illustrations 3, 4 and 5 except illustration N° 3 positions 16, 23, 24, 25 and 31, and illustration N° 5 positions 53 | 48737-164 |
| 7 | Upper row frame | 48837-229 | | | |
| 8 | Gathering chain | 30603-860 | | | |
| 9 | Gathering chain drive sprocket | 31512-300 | | | |
| 10 | Type "A" key 8 x 7 x 25 mm. | 23331-279 | | | |
| 11 | Stop washer | 43400-684 | | | |
| 12 | Self lock hex nut RM 16 mm. | 27963-110 | | | |
| 13 | Pressure washer Ø 12 mm. | 20814-110 | | | |
| 14 | Hex. bolt RM 12 x 40 mm. | 21705-409 | | | |
| 15 | Allen bolt RM 12 x 45 mm | 27113-309 | | | |
| 16 | Left lock points pin | 48837-203 | | | |
| | Right lock points pin | 48837-202 | | | |
| 17 | Plain washer Ø 1/2" | 20800-106 | | | |
| 18 | Hex. bolt RM 12 x 75 mm. | 21705-416 | | | |
| 19 | Spring guide | 48837-206 | | | |
| 20 | Spring | 36018-939 | | | |
| 21 | Plain washer Ø 5/8" | 20801-108 | | | |
| 22 | Hex. bolt RM 12 x 20 mm. | 21705-403 | | | |
| 23 | Hood lock pin | 48736-520 | | | |
| 24 | Thin hex nut RM 24 mm. | 27932-111 | | | |
| 25 | Support hood lock pin (central) | 48837-233 | | | |
| 26 | LH chain guide | 48837-231 | | | |
| 27 | Adjuster | 30307-250 | | | |
| 28 | Tensor sprocket | 36630-120 | | | |
| 29 | LH tensor arm | 48736-535 | | | |
| 30 | Tensor for bolt gathering chain | 48836-622 | | | |
| 31 | RH tensor arm | 48736-534 | | | |
| 32 | RH chain guide | 48837-230 | | | |
| 33 | LH snap plate | 48736-533 | | | |



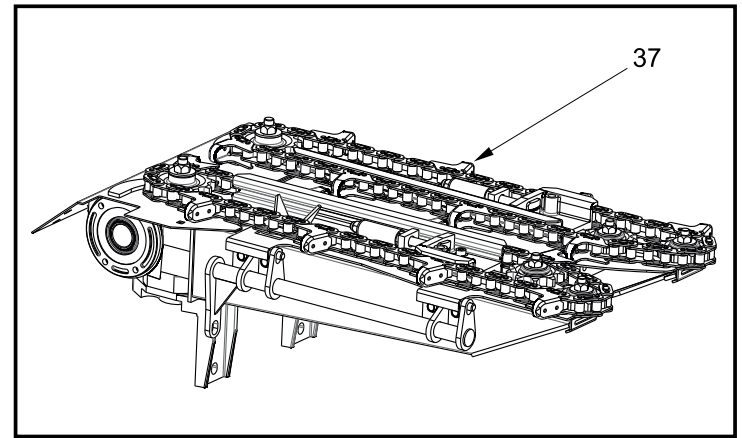
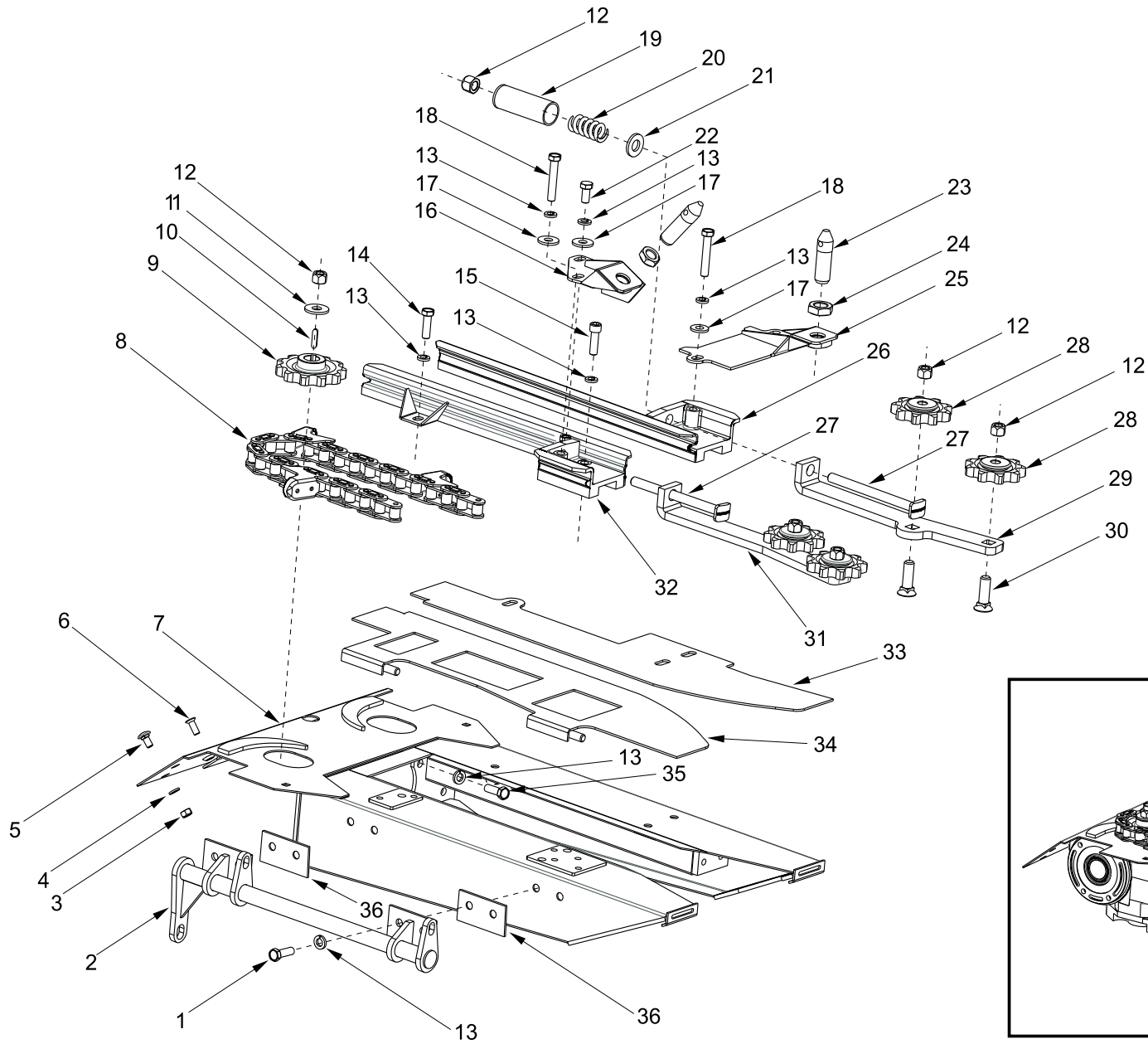


ILLUSTRATION N° 3: COMBINED RECOLECTOR

SPARE PARTS LISTING OF THE ILLUSTRATION N° 4

| POS. | DENOMINATION | SPARE N° | POS. | DENOMINATION | SPARE N° |
|------|---|-----------|------|--|-----------|
| 1 | Deburring front right | 48837-224 | | | |
| 2 | Hex. bolt RM 12 x 25 mm | 21705-405 | | | |
| 3 | Pressure washer Ø 12 mm | 20814-110 | | LH roller set with blades. (composed by position: 6, 7, 8, 9, 10 and 11) | 48737-145 |
| 4 | Plain washer Ø 13 mm e : 1/8" | 48936-754 | | Set right descaler with bladed blade and toe. (composed by position: 6, | |
| 5 | Roll scraper | 48736-505 | | 7, 8, 9, 10, 11, 13, 14 and 29) | 48737-165 |
| 6 | Coulter bolted | 48836-677 | | Set left descaler blade with welded blade and toe (composed by position: | |
| 7 | Plain washer | 48836-680 | | 12, 13, 14 and 15) | 48737-166 |
| 8 | RH SN bolt RM 12 x 70 mm | 21409-359 | | | |
| 9 | RH flute roll | 48837-214 | | | |
| 10 | Plain washer Ø 1/2" | 20800-106 | | | |
| 11 | Self lock hex nut RM 12 mm | 27963-108 | | | |
| 12 | LH flute roll | 48837-213 | | | |
| 13 | Rolled pin Ø 8 x 55 mm | 23702-346 | | | |
| 14 | Rolled pin Ø 8 x 45 mm | 23702-344 | | | |
| 15 | RH propeller point with roller bearing LH | 48737-167 | | | |
| 16 | Plain washer Ø 3/8" | 20800-104 | | | |
| 17 | Spacer for roll bearing (Thk.: 0.46 mm) | 48836-628 | | | |
| 18 | Spacer for roll bearing (Thk. : 1,54 mm) | 48736-603 | | | |
| 19 | Spacer for roll bearing (Thk. : 1,24 mm) | 48736-602 | | | |
| 20 | Deburring left front | 48837-223 | | | |
| 21 | LH divider cover | 48736-509 | | | |
| 22 | LH roll bearing | 30670-101 | | | |
| 23 | Self lock hex nut RM 10 mm | 27963-107 | | | |
| 24 | Hex. bolt RM 10 x 35 mm | 21705-375 | | | |
| 25 | RH roll bearing | 30670-102 | | | |
| 26 | Hex. bolt RM 12 x 35 mm | 21705-408 | | | |
| 27 | RH divider cover | 48736-508 | | | |
| 28 | RH SN bolt 10 x 25 mm | 21409-328 | | | |
| 29 | LH propeller point with roller bearing RH | 48837-168 | | | |
| 30 | Roll sealed bearing | 69212-011 | | | |



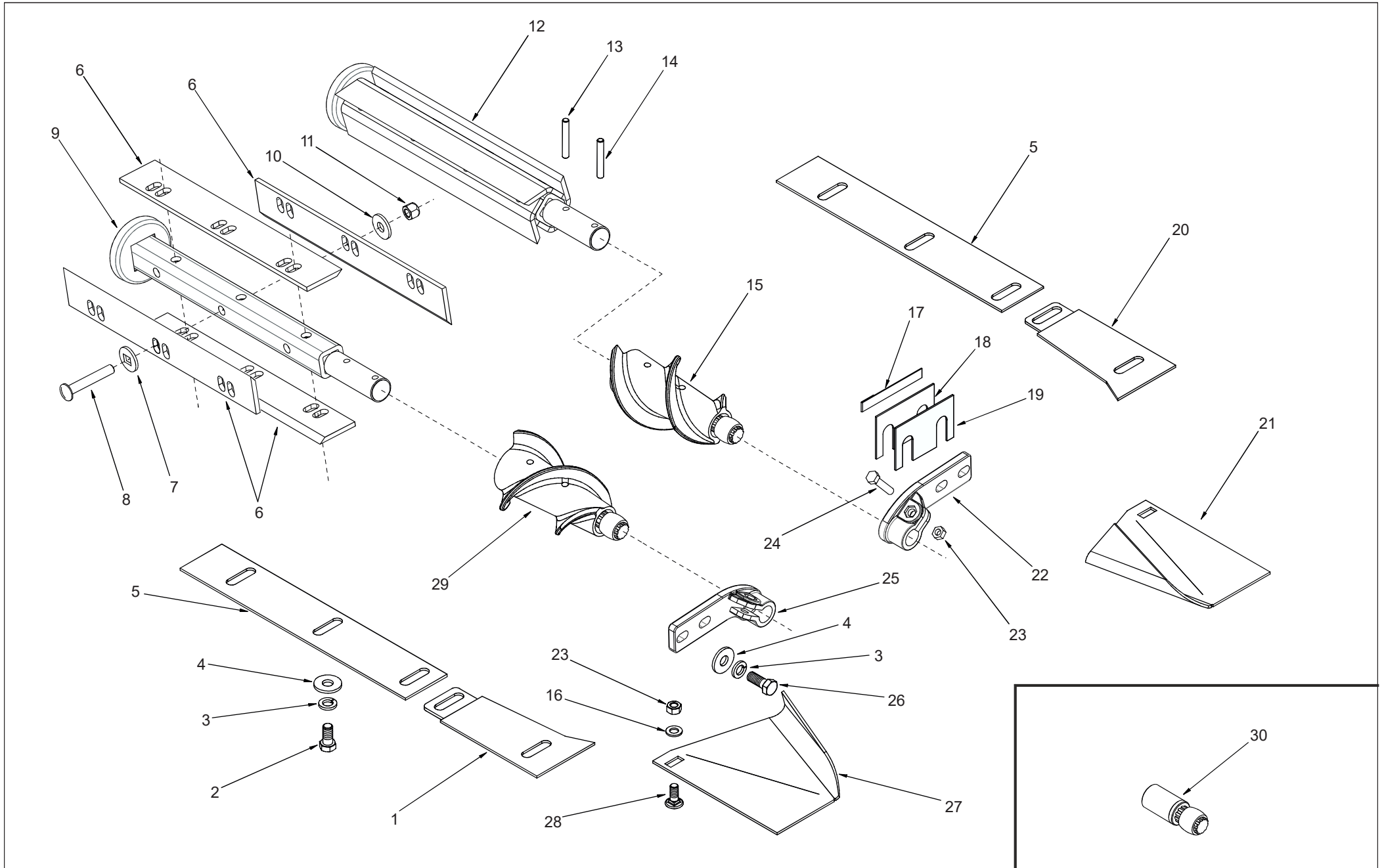


ILLUSTRATION N° 4: ROLLER WITH BLADES

SPARE PARTS LISTING OF THE ILLUSTRATION N° 5

| POS. | DENOMINATION | SPARE N° | POS. | DENOMINATION | SPARE N° |
|------|---------------------------------------|-----------|------|---|-----------|
| 1 | Taper roller bearing N° 30210 | 65130-210 | 32 | Self lock hex nut RM 16 mm | 27963-110 |
| 2 | Spacer washer – Thk.: 0,13 mm | 20808-107 | 33 | Hex. bolt RM 16 x 150 mm | 21705-497 |
| | Spacer washer – Thk.: 0,25 mm | 20808-108 | 34 | Gear box pin | 48836-963 |
| 3 | RH helix sprocket auger - 9 teeth | 48703-686 | 35 | Bronze bushing | 30304-163 |
| 4 | Safety ring – DIN 471 – Ø 60 x 2 mm | 20600-152 | 36 | RH helical gear - 15 teeth | 48703-688 |
| 5 | Taper toothed gear- 24 teeth | 48703-615 | 37 | Vertical shaft | 48703-690 |
| 6 | Breathing plug | 37213-721 | 38 | Type "A" key 6885 – 8 x 7 x 25 mm | 23331-279 |
| 7 | Plain washer Ø 10 mm | 20830-102 | 39 | Galvanized male drain plug 1/4" BSPT | 26309-101 |
| 8 | Housing | 48703-684 | 40 | Joint for side cover Thk.: 0,2 mm. | 48703-629 |
| | Set housing with bushing | 48703-130 | 41 | Disk clutch 560 NM | 48703-176 |
| 9 | Bronze bushing | 30304-162 | 42 | Allen bolt RM 10 x 60 mm | 27113-284 |
| 10 | Seal SAV – 7243 | 25616-100 | 43 | Pressure washer Ø 3/8" | 20810-108 |
| 11 | Safety ring Ø 3 x 23 mm. | 30020-115 | 44 | Hub | 48736-536 |
| 12 | Oil level plug | 48703-210 | 45 | Bushings | 48703-631 |
| 13 | Main shaft | 48803-614 | 46 | Spacer hub coupling | 48736-521 |
| 14 | LH helix sprocket auger - 9 teeth | 48703-685 | 47 | Hex. bolt 3/8" x 1" G°5 | 21605-181 |
| 15 | Joint for side cover – Thk.: 0,4 mm | 48703-638 | 48 | Torque limiter housing | 48703-245 |
| 16 | Side cover | 48803-613 | 49 | Overload clutch | 48703-634 |
| 17 | Seal SAV – 7246 | 25616-139 | 50 | Hub | 48703-596 |
| 18 | Countersink head screw RM 10 x 30 mm | 27307-278 | 51 | Belleville spring | 48803-604 |
| 19 | Output shaft for rolls | 48703-604 | 52 | Retainining ring DIN 472 - Ø 107 x 4,0 mm | 20601-175 |
| 20 | Spacer washer Thk.: 1.6 mm | 48703-628 | 53 | Wrench for oil cap | 48729-210 |
| | Spacer washer Thk.: 0.46 mm | 48836-629 | | | |
| 21 | Taper roller bearing N° 30207 | 65130-207 | | Complete box without cluch | 48703-189 |
| 22 | Spacer washer Thk.: 0,25 mm | 45203-605 | | | |
| 23 | Spacer washer Thk.: 0.89 mm | 42741-647 | | | |
| 24 | Long spacer for output shaft | 48703-671 | | | |
| 25 | Safety ring – DIN 471 – Ø 35 x 1,5 mm | 20600-132 | | | |
| 26 | Spacer washer Thk.: 0,3 mm | 20808-110 | | | |
| 27 | Safety ring – DIN 472 – Ø 72 x 2,5 mm | 20601-157 | | | |
| 28 | Seal SAV – 7295 | 25616-113 | | | |
| 29 | LH helical gear - 15 teeth | 48703-687 | | | |
| 30 | Lower cover with bushing | 48703-131 | | | |
| 31 | Plain washer Ø 5/8" | 20800-108 | | | |



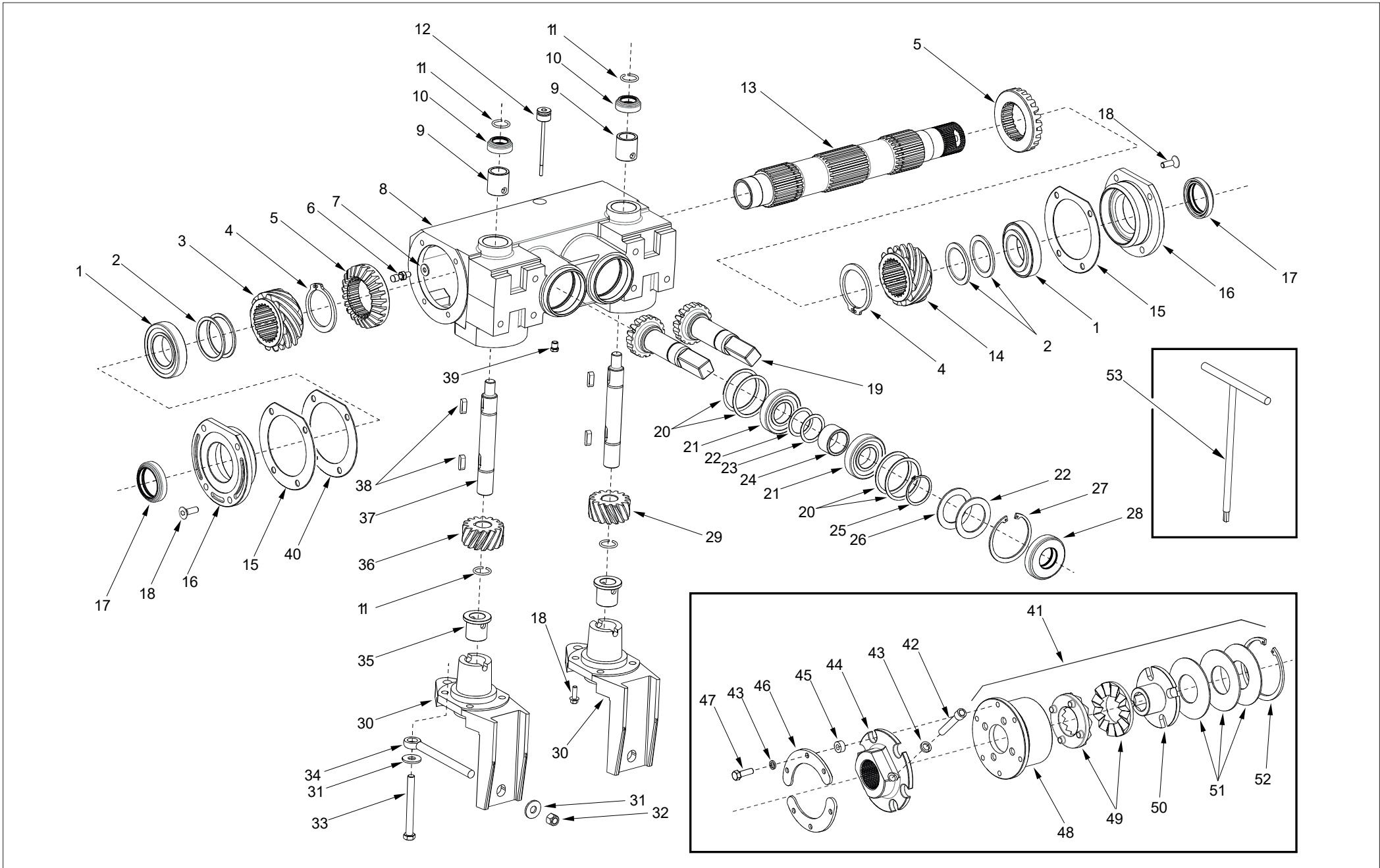


ILLUSTRATION N° 5: GEAR BOX AND DISK CLUTCH

SPARE PARTS LISTING OF THE ILLUSTRATION N° 6

| POS. | DENOMINATION | SPARE N° | POS. | DENOMINATION | SPARE N° |
|------|--|-----------|------|---|-----------|
| 1 | Hood lock stand | 48737-293 | 34 | Register height | 48737-283 |
| 2 | Hood | 48737-290 | 35 | Hex. bolt RM 12 x 60 mm | 21705-413 |
| 3 | Self lock hex nut RM 10 mm | 27963-107 | 36 | Point support | 48736-514 |
| 4 | Plain washer Ø 3/8" | 20800-104 | 37 | Pressure washer Ø 12 mm | 20814-110 |
| 5 | RH SN bolt RM 10 x 22 mm | 21409-327 | 38 | Hex. bolt RM 12 x 20 mm | 21705-403 |
| 6 | Hood pivot support | 48837-232 | 39 | Bolt | 48836-673 |
| 7 | Plain washer Ø 1/4" | 20801-102 | 40 | Hex. bolt RM 10 x 22 mm | 21705-371 |
| 8 | Self lock hex nut RM 6 mm | 27963-104 | 41 | Pressure washer Ø 10 mm | 20814-109 |
| 9 | Self lock hex nut RM 8 mm | 27963-106 | 42 | Sensor support base | 48836-675 |
| 10 | Plain washer Ø 5/16" | 20801-103 | 43 | Wiring guide support | 48837-234 |
| 11 | RH SN bolt RM 8 x 20 mm | 21409-304 | | | |
| 12 | Points lock pin | 48737-288 | | | |
| 13 | RH SN bolt RM 6 x 16 mm | 21409-258 | | | |
| 14 | Cotter pin 4 x 22 mm | 25102-185 | | | |
| 15 | Points lock pin | 48737-284 | | Complete armed central canopy assembly. Composed by position: 1, 2, 7, 8, 9, 10, 11, 12, 13, 14, 15, 16, 17, 18, 26, 30, 31, 32, 37 and 38 | 48737-151 |
| 16 | Spring | 36018-421 | | | |
| 17 | Hood lock | 48737-285 | | Central armed toothed complete set without sensor support. Composed by position: 7, 8, 14, 16, 19, 20, 21, 22, 23, 24, 25, 26, 27, 28, 29 and 33 | 48737-130 |
| 18 | RH SN bolt RM 8 x 45 mm | 21409-310 | | | |
| 19 | Fastener | 48836-603 | | | |
| 20 | Ear protector | 30660-138 | | | |
| 21 | Support | 48737-287 | | Central armed toe assembly complete with sensor holder. Composed by position: 7, 8, 14, 16, 19, 20, 21, 22, 23, 24, 25, 26, 27, 28, 29, 33, 40, 41 and 42 | 48737-141 |
| 22 | Pin support | 48736-523 | | | |
| 23 | Pin | 48836-258 | | | |
| 24 | Hex. bolt RM 6 x 16 mm | 21705-280 | | | |
| 25 | Pressure washer Ø 6 mm | 20814-107 | | | |
| 26 | Self lock hex nut RM 12 mm | 27963-108 | | | |
| 27 | Point shoe | 48737-286 | | | |
| 28 | RH SN bolt RM 12 x 55 mm | 21409-356 | | | |
| 29 | Standard point | 48737-289 | | | |
| | Point with sensor support | 48837-207 | | | |
| 30 | Plain washer Ø 1/2" | 20801-106 | | | |
| 31 | Bushing hood pivot | 48736-647 | | | |
| 32 | Hex. bolt RM 12 x 35 mm | 21705-408 | | | |
| 33 | Hex. bolt semicylindrical RM 6 x 18 mm | 21718-190 | | | |



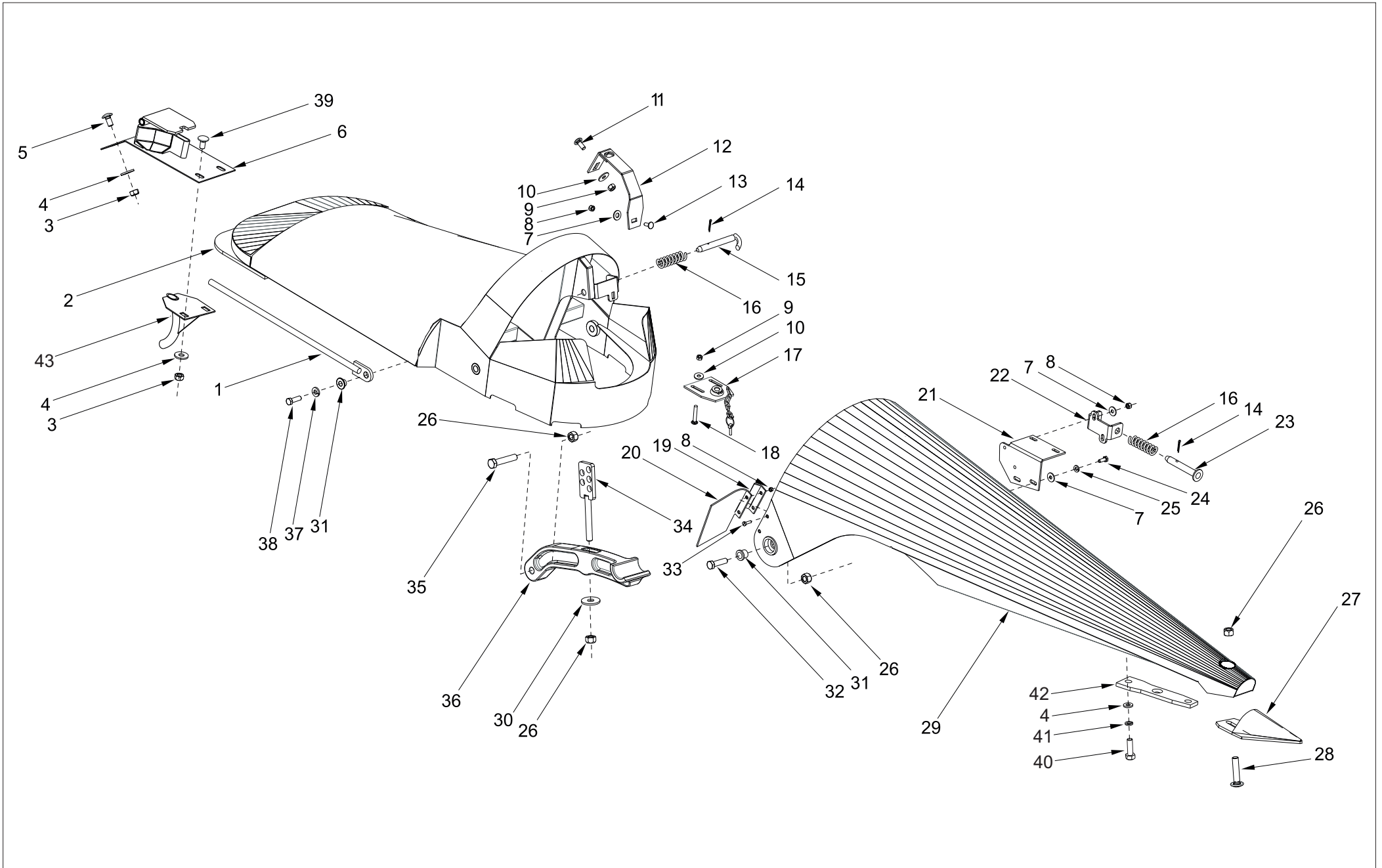


ILLUSTRATION N° 6: CENTRAL POINT AND HOOD

SPARE PARTS LISTING OF THE ILLUSTRATION N° 7

| POS. | DENOMINATION | SPARE N° | POS. | DENOMINATION | SPARE N° |
|------|-----------------------------|-----------|------|--|-----------|
| 1 | Hex Bolt 1/4 "x 3/4" | 21402-128 | | Front left wing hairpiece | 48837-217 |
| 2 | Fuse holder cube | 48837-212 | 35 | Register height | 48737-283 |
| 3 | Sprocket Z-25 P-5/8 " | 45258-665 | 36 | Point support | 48736-514 |
| 4 | Spacer washer | 44001-651 | 37 | Plain washer Ø 1/2" | 20801-106 |
| 5 | Pin DIN Ø 6 x 32 mm | 23702-314 | 38 | Self lock hex nut RM 12 mm | 27963-108 |
| 6 | Hex. bolt RW 3/8" x 3/4" | 21605-179 | 39 | Hex. bolt RM 12 x 60 mm | 21705-413 |
| 7 | Pressure washer Ø 3/8" | 20810-108 | 40 | Pin | 48737-284 |
| 8 | Plain washer Ø 1/4" | 20801-102 | 41 | Spring | 36018-421 |
| 9 | Pressure washer Ø 6 mm | 20814-107 | 42 | Cotter pin 4 x 22 mm | 25102-185 |
| 10 | Hex. bolt RM 6 x 12 mm | 21705-278 | 43 | Bushing hood pivot | 48736-647 |
| 11 | Hex. bolt RM 8 x 16 mm | 21705-337 | 44 | Hex. bolt RM 12 x 35 mm | 21705-408 |
| 12 | Pressure washer Ø 8 mm | 20814-108 | 45 | Neumatic spring | 36018-426 |
| 13 | Plain washer Ø 5/16" | 20801-103 | 46 | RH eave | 48837-208 |
| 14 | Drive auger protection | 48736-519 | 46 | LH eave | 48837-209 |
| 15 | LH protection | 48736-517 | 47 | Rolled pin 6 x 40 mm | 23702-316 |
| | RH protection | 48736-518 | 48 | Gear box shaft | 48936-256 |
| 16 | Hex. bolt RM 8 x 20 mm | 21705-339 | 49 | Safety ring DIN-471 45 X 1,75 | 20600-141 |
| 17 | Stop washer | 48836-660 | 50 | Pressure washer Ø 1/4" | 20810-106 |
| 18 | Spacer washer Thk.: 1,55 mm | 43456-613 | | | |
| 19 | Spacer bushing | 48836-657 | | LH side wing assembly with endless. Composed by position: 5, 6, 7, 8, 9,10, | |
| 20 | Spacer washer Thk.: 0,46 mm | 43400-612 | | 11, 12, 13, 14, 15 LH, 16, 17, 18, 19, 20, 21, 22 LH, 23, 24, 25, 26, 27 LH, | |
| 21 | Grease nipple 1/16" | 24902-100 | | 28, 29, 30, 31, 32, 33, 34 LH, 40, 41 LH, 42, 43, 44, 46, 47 and 48 | 48737-152 |
| 22 | RH gear box | 30631-600 | | | |
| | LH gear box | 30631-590 | | RH side wing assembly with endless. Composed by position: 5, 6, 7, 8, 9,10, | |
| 23 | Hex. bolt RM 10 x 20 mm | 21705-370 | | 11, 12, 13, 14, 15 RH, 16, 17, 18, 19, 20, 21, 22 RH, 23, 24, 25, 26, 27 RH, | |
| 24 | Pressure washer Ø 10 mm | 20814-109 | | 28, 29, 30, 31, 32, 33, 34 RH, 40, 41 RH, 42, 43, 44, 46, 47 and 48 | 48737-153 |
| 25 | Plain washer Ø 3/8" | 20801-104 | | | |
| 26 | Shaft for eave auger | 48936-257 | | | |
| 27 | LH auger eave | 48737-279 | | | |
| | RH auger eave | 48737-278 | | | |
| 28 | Bearing UC-205 | 65900-205 | | | |
| 29 | Bearing housing | 69230-052 | | | |
| 30 | Self lock hex nut RM 8 mm | 27963-106 | | | |
| 31 | Plain washer Ø 5/16" | 20801-103 | | | |
| 32 | Eave lock | 48837-204 | | | |
| 33 | RH SN bolt RM 8 x 45 mm | 21409-310 | | | |
| 34 | Hairpiece front right wing | 48837-218 | | | |



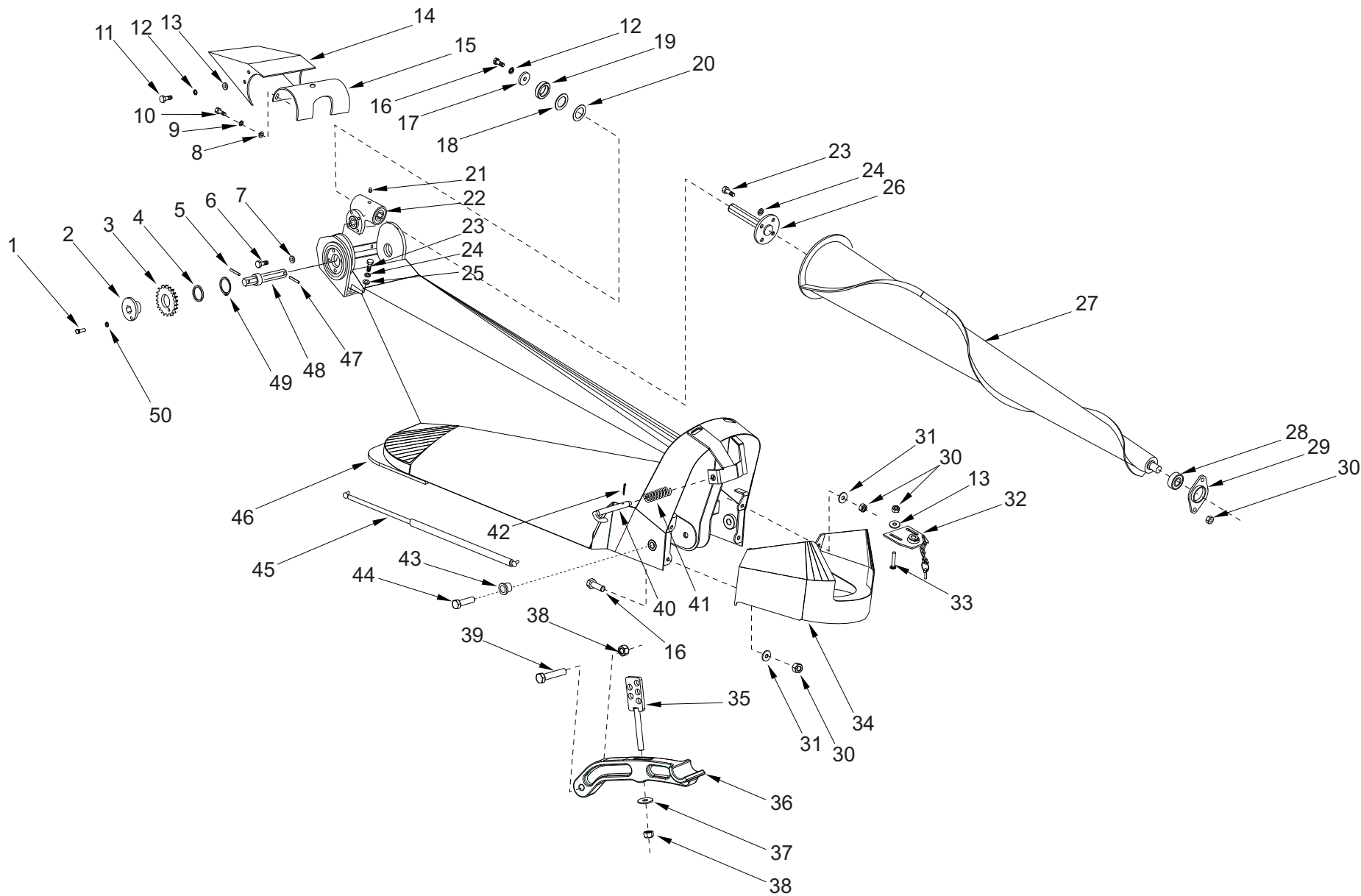


ILLUSTRATION N° 7: SIDE POINT AND HOOD

SPARE PARTS LISTING OF THE ILLUSTRATION N° 8

| POS. | DENOMINATION | SPARE N° | POS. | DENOMINATION | SPARE N° |
|------|--|-----------|--|--------------|----------|
| 1 | Ear protector | 30660-138 | RH side toe assembly. Composed by position: 1, 2, 3, 4, 5 RH, 6 RH, 7, 8, 9,10, 11, 12, 13, 14, 15, 16, 17, 18, 19, 20 and 21 | 48737-134 | |
| 2 | Fastener | 48836-603 | | | |
| 3 | Self lock hex nut RM 6 mm | 27963-104 | | | |
| 4 | Upper toe side door | 48837-220 | | | |
| 5 | LH support | 48737-248 | | | |
| | RH support | 48737-294 | | | |
| 6 | Pin support LH side | 48736-523 | | | |
| | Pin support RH side | 48736-524 | | | |
| 7 | Plain washer Ø 1/4" | 20801-102 | | | |
| 8 | Spring | 36018-421 | | | |
| 9 | Cotter pin 4 x 30 mm | 25102-188 | | | |
| 10 | Pin | 48836-258 | | | |
| 11 | Hex. bolt RM 6 x 16 mm | 21705-280 | | | |
| 12 | Pressure washer Ø 6 mm | 20814-107 | | | |
| 13 | Side point | 48737-295 | | | |
| 14 | Self lock hex nut RM 12 mm | 27963-108 | | | |
| 15 | Point shoe | 48737-286 | | | |
| 16 | RH SN bolt RM 12 x 55 mm | 21409-356 | | | |
| 17 | Hex. bolt RM 10 x 22 mm | 21705-371 | | | |
| 18 | Pressure washer Ø 10 mm | 20814-109 | | | |
| 19 | Plain washer Ø 3/8" | 20800-104 | | | |
| 20 | Sensor support base | 48836-675 | | | |
| 21 | Hex. bolt semicylindrical RM 6 x 18 mm | 21718-190 | | | |
| | | | | | |
| | | | | | |
| | | | | | |
| | | | | | |
| | | | | | |
| | | | | | |
| | | | | | |
| | | | | | |
| | | | | | |
| | | | | | |
| | | | | | |
| | | | | | |
| | | | | | |



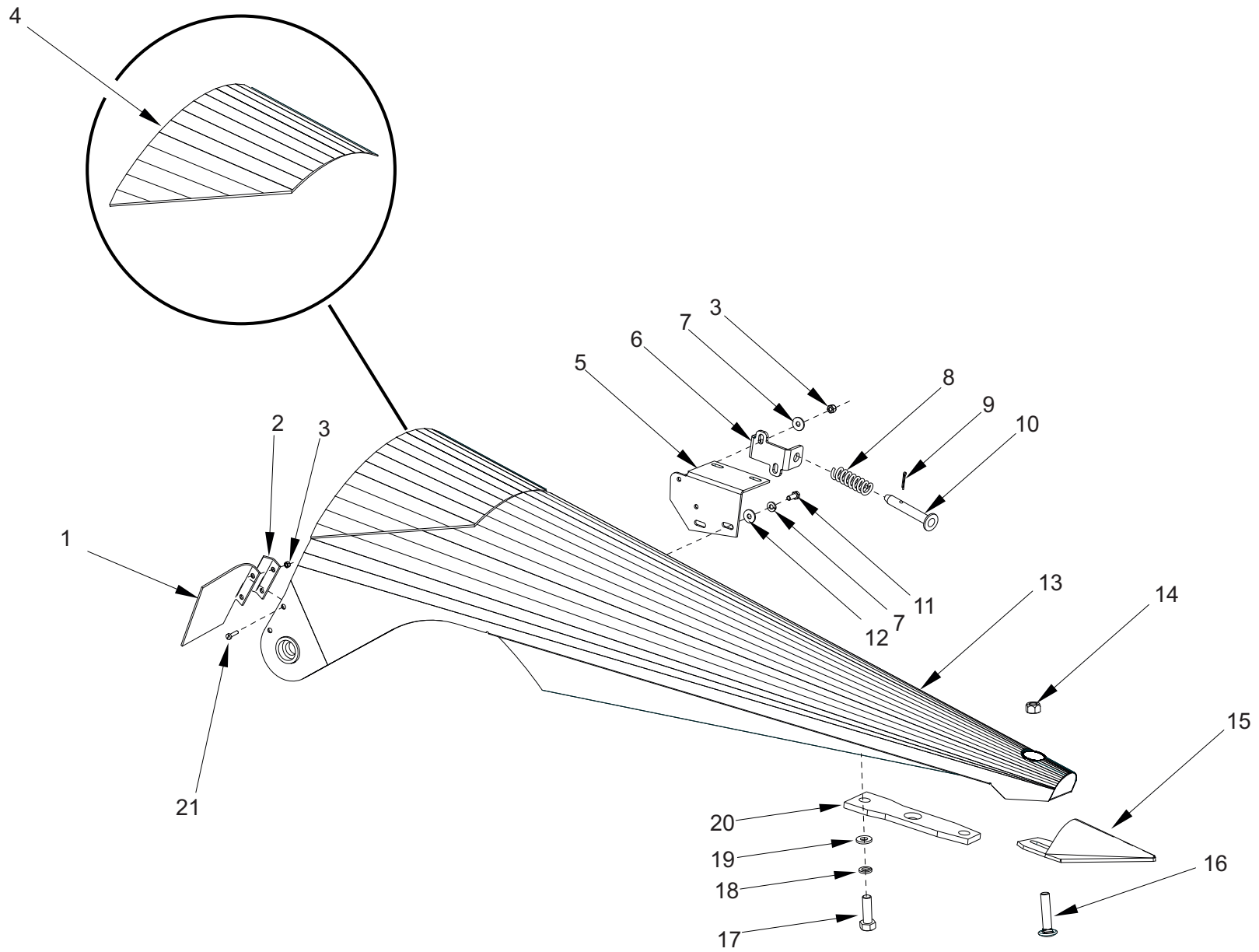


ILLUSTRATION N° 8: SIDE POINT

SPARE PARTS LISTING OF THE ILLUSTRATION N° 9

| POS. | DENOMINATION | SPARE N° | POS. | DENOMINATION | SPARE N° |
|------|--------------------------------------|-----------|------|--|-----------|
| 1 | Plain washer aluminio Ø 10 mm | 20802-104 | 24 | Drive box side chain 1" x 78 rod. ASA-80-H | 41574-675 |
| 2 | Vent valve | 37213-725 | 25 | Chain tensor | 32112-358 |
| 3 | Hex. bolt RM 12 x 35 mm | 21705-408 | 26 | Spring | 36018-936 |
| 4 | Pressure washer Ø 12 mm | 20814-110 | 27 | Self lock hex nut RM 10 mm | 27963-107 |
| 5 | Drive box side sprocket Z=23 P=1" | 48803-600 | 28 | Spacer washer | 48703-543 |
| 6 | Cover | 48703-590 | 29 | Supplement | 48703-577 |
| 7 | O`ring | 21001-138 | 30 | Supplement | 48703-578 |
| 8 | Hex. bolt RM 10 x 30 mm | 21705-374 | 31 | Seal SAV – 6720 | 25606-469 |
| 9 | Pressure washer Ø 10 mm | 20814-109 | 32 | Hub | 48803-601 |
| 10 | Stop washer | 43455-638 | 33 | Half link roller chain 1" ASA-80 H | 28109-102 |
| 11 | Hub | 48703-585 | 34 | Roller chain joint 1" ASA-80 H | 24611-102 |
| 12 | Safety ring DIN 472 110 x 4 | 20601-177 | | | |
| 13 | Bearing 6212 2RS | 60406-212 | | | |
| 14 | Safety ring DIN 471 60 x 2 | 20600-152 | | | |
| 15 | Bearing housing | 48703-587 | | | |
| 16 | O`ring | 21001-160 | | | |
| 17 | RH gear box shaft | | | | |
| | RH gear box shaft 12 rows L: 3400 mm | 48703-589 | | | |
| | RH gear box shaft 14 rows L: 3800 mm | 48803-616 | | | |
| | RH gear box shaft 16 rows L: 4250 mm | 48803-617 | | | |
| | RH gear box shaft 18 rows L: 5000 mm | 48703-515 | | | |
| | RH gear box shaft 20 rows L: 5300 mm | 48803-619 | | | |
| | LH gear box shaft | | | | |
| | LH gear box shaft 12 rows L: 2782 mm | 48803-615 | | | |
| | LH gear box shaft 14 rows L: 3400 mm | 48703-589 | | | |
| | LH gear box shaft 16 rows L: 4000 mm | 48703-529 | | | |
| | LH gear box shaft 18 rows L: 4250 mm | 48803-617 | | | |
| | LH gear box shaft 20 rows L: 5000 mm | 48703-515 | | | |
| 18 | Basket tensor support | 48703-247 | | | |
| 19 | Drive box side sprocket Z=16 P=1" | 48703-597 | | | |
| 20 | Weatherstrip side cover | 30331-140 | | | |
| 21 | Cover side drive | 48703-246 | | | |
| 22 | Hex. bolt RM 10 x 20 mm | 21705-370 | | | |
| 23 | Hex. bolt RM 10 x 16 mm | 21705-368 | | | |



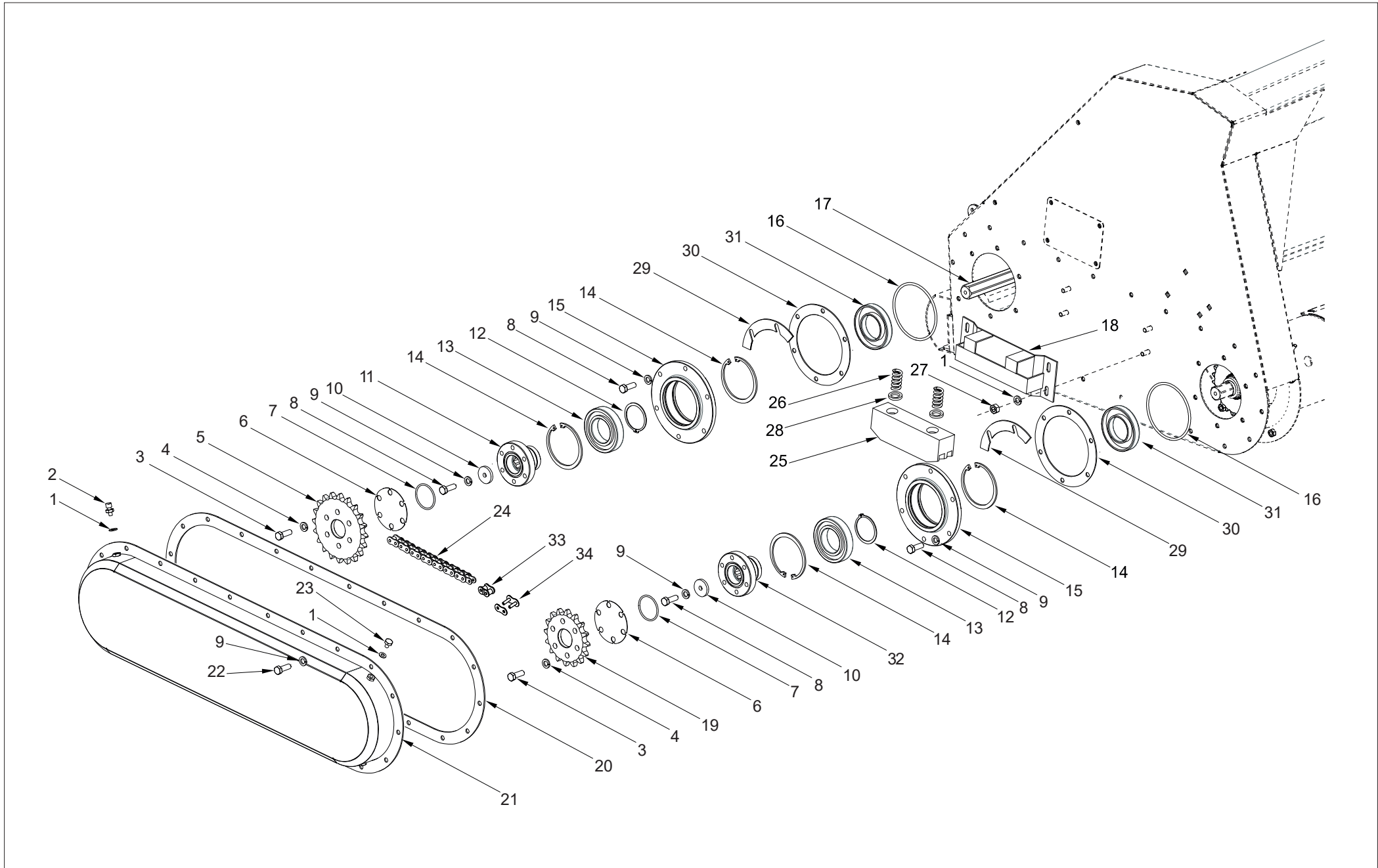


ILLUSTRATION N° 9: SIDE DRIVE

SPARE PARTS LISTING OF THE ILLUSTRATION N° 10

| POS. | DENOMINATION | SPARE N° | POS. | DENOMINATION | SPARE N° |
|------|----------------------------------|-----------|------|-----------------------------------|-----------|
| 1 | Self lock hex nut RM 12 mm | 27963-108 | 32 | Half link 5/8" | 24612-102 |
| 2 | Plain washer Ø 1/2" | 20800-106 | 33 | Tensor | 48736-526 |
| 3 | Bearing support | 69220-085 | 34 | Drive chain auger side cover | 48736-527 |
| 4 | Bearing | 68920-009 | 35 | RH SN bolt RM 8 x 16 mm | 21409-302 |
| 5 | Auger central shaft | 48877-221 | 36 | Plain washer Ø 5/16" | 20801-103 |
| 6 | Central bedplate | 48877-216 | 37 | Self lock hex nut RM 8 mm | 27963-106 |
| 7 | RH SN bolt RM 12 x 30 mm | 21409-351 | 38 | LH auger 12 rows | 48877-233 |
| 8 | Self lock hex nut RM 12 mm | 27963-108 | | LH auger 14 rows | 48877-245 |
| 9 | Plain washer Ø 1/2" | 20801-106 | | LH auger 16 rows | 48877-241 |
| 10 | RH SN bolt RM 10 x 65 mm | 21409-358 | | LH auger 18 rows | 48877-235 |
| 11 | RH auger 12 rows | 48877-234 | | LH auger 20 rows | 48877-243 |
| | RH auger 14 rows | 48877-246 | 39 | LH cover | 48701-275 |
| | RH auger 16 rows | 48877-242 | | RH cover | 48701-276 |
| | RH auger 18 rows | 48877-236 | 40 | Cover | 48700-558 |
| | RH auger 20 rows | 48877-244 | 41 | Spacer washer | 48777-636 |
| 12 | Hex. bolt RM 12 x 190 mm | 21705-430 | 42 | Bronze bushing | 30304-164 |
| 13 | Tuerca hexag. RM 12 mm | 27942-114 | 43 | Clutch support and drive sprocket | 48777-210 |
| 14 | RH support tensor | 48877-232 | 44 | Straight grease nipple 6 mm | 24925-100 |
| | LH support tensor | 48877-231 | 45 | See Illustration No. 7 | ----- |
| 15 | RH SN bolt RM 10 x 20 mm | 21409-326 | 46 | Inspection cover | 48836-676 |
| 16 | Tensor stand | 48877-204 | 47 | Pressure washer Ø 6 mm | 23702-314 |
| 17 | Drive auger sprocket Z=16 P=3/4" | 48777-648 | 48 | Hex. bolt RM 12 x 65 mm | 21705-414 |
| 18 | Auger side shaft | 48777-670 | 49 | Stop washer | 45280-555 |
| 19 | Stop washer | 48777-663 | 50 | Safety ring 40 x 1,75 | 20601-132 |
| 20 | Pressure washer Ø 12 mm | 20814-110 | 51 | Tensor sprocket | 48776-626 |
| 21 | Hex. bolt RM 12 x 30 mm | 21705-407 | 52 | Bearing | 60406-203 |
| 22 | Hex. bolt RM 12 x 35 mm | 21705-375 | 53 | Spacer bushing | 48777-662 |
| 23 | Pressure washer Ø 10 mm | 20814-109 | 54 | Safety ring 60 x 2 | 20600-152 |
| 24 | Auger drive sprocket | 48777-286 | 55 | Self lock hex nut RM 6 mm | 27963-104 |
| 25 | Hub for auger drive sprocket | 48877-205 | 56 | Hex. bolt RM 8 x 90 mm | 21705-355 |
| 26 | Register | 48877-230 | 57 | Pressure washer Ø 8 mm | 20814-108 |
| 27 | LH auger support | 48877-219 | 58 | Spacer washer | 48703-516 |
| | RH auger support | 48877-220 | 59 | Spacer washer | 44001-513 |
| 28 | Auger drive sprocket eave | 48936-254 | 60 | Spacer washer | 44001-514 |
| 29 | Spacer bushing | 48777-671 | 61 | Hex bolt RM 6 x 12 mm | 21705-278 |
| 30 | Register | 48777-672 | 62 | Hex bolt RM 12 x 55 mm | 21706-412 |
| 31 | Roller chain joint 5/8" | 28104-103 | 63 | Hex bolt RM 12 x 70 mm | 21706-415 |



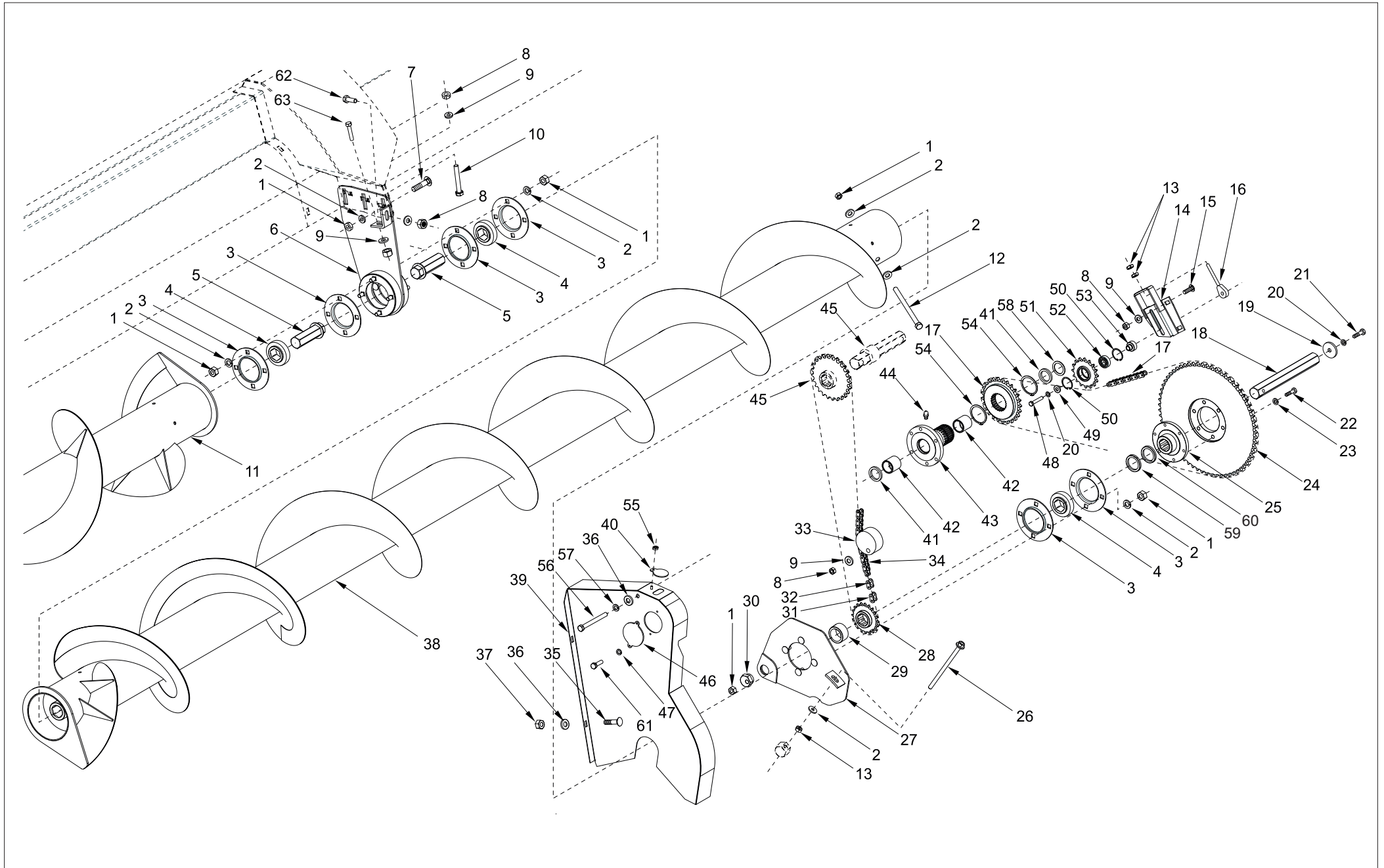


ILLUSTRATION N° 10: AUGER

SPARE PARTS LISTING OF THE ILLUSTRATION N° 11

| POS. | DENOMINATION | SPARE N° | POS. | DENOMINATION | SPARE N° |
|------|------------------------------|-----------|------|---------------------------------|-----------|
| 1 | Hex. bolt RM 10 x 22 mm | 21705-371 | 31 | Plain washer Ø 5/16" | 20801-103 |
| 2 | Pressure washer Ø 10 mm | 20814-109 | 32 | Self lock hex nut RM 8 mm | 27963-106 |
| 3 | Inner reinforcing protection | 41674-511 | 33 | Support tube main shaft 14 rows | 48876-219 |
| 4 | Cable support clip pin | 43125-120 | | Support tube main shaft 16 rows | 48876-217 |
| 5 | PTO lock pin | 43101-236 | | Support tube main shaft 18 rows | 48876-215 |
| 6 | PTO support | 48700-118 | | Support tube main shaft 20 rows | 48876-218 |
| 7 | Self lock hex nut RM 10 mm | 27963-107 | 34 | Drive input shaft - main | 48776-583 |
| 8 | Cap | 41674-502 | 35 | Self lock hex nut RM 6 mm | 27963-104 |
| 9 | Outer reinforcing protection | 41674-510 | 36 | Plain washer Ø 1/4" | 20801-102 |
| 10 | Bearing support | 41111-654 | 37 | Hex. bolt RM 6 x 20 mm | 21705-282 |
| 11 | Bearing UC-207 | 65900-211 | 38 | Protection main shaft 12 rows | 48776-586 |
| 12 | RH SN bolt RM 10 x 25 mm | 21409-328 | | Protection main shaft 14 rows | 48776-593 |
| 13 | Cap support | 48776-282 | | Protection main shaft 16 rows | 48776-591 |
| 14 | RH SN bolt RM 10 x 22 mm | 21409-327 | | Protection main shaft 18 rows | 48776-589 |
| 15 | LH bedplate 16-18-20 lines | 48876-205 | | Protection main shaft 20 rows | 48776-592 |
| | RH bedplate 16-18-20 lines | 48876-206 | 39 | Self lock hex nut RM 12 mm | 27963-108 |
| | LH bedplate 12-14 lines | 48876-213 | 40 | Hex. bolt RM 10 x 20 mm | 21705-370 |
| | RH bedplate 12-14 lines | 48876-212 | 41 | Input shaft (only for 12 rows) | 48776-587 |
| 16 | Plain washer Ø 3/8" | 20801-104 | | | |
| 17 | Hex. bolt RM 10 x 25 mm | 21705-372 | | | |
| 18 | Drive output shaft - main | 48776-584 | | | |
| 19 | Disk clutch 450 NM | 30339-593 | | | |
| 20 | Hex. bolt RM 10 x 35 mm | 21705-375 | | | |
| 21 | Hex. bolt RM 12 x 100 mm | 21705-421 | | | |
| 22 | Bushing | 48776-585 | | | |
| 23 | Hex. nut RM 10 mm | 27935-113 | | | |
| 24 | Side outer cover | 48700-575 | | | |
| 25 | Hex. bolt RM 10 x 16 mm | 21705-368 | | | |
| 26 | Side cover | 48700-574 | | | |
| 27 | Side register tensor | 48701-279 | | | |
| 28 | Protector support main shaft | 48876-211 | | | |
| 29 | LH clutch protection | 48877-223 | | | |
| | RH clutch protection | 48877-222 | | | |
| 30 | Cover | 48777-673 | | | |



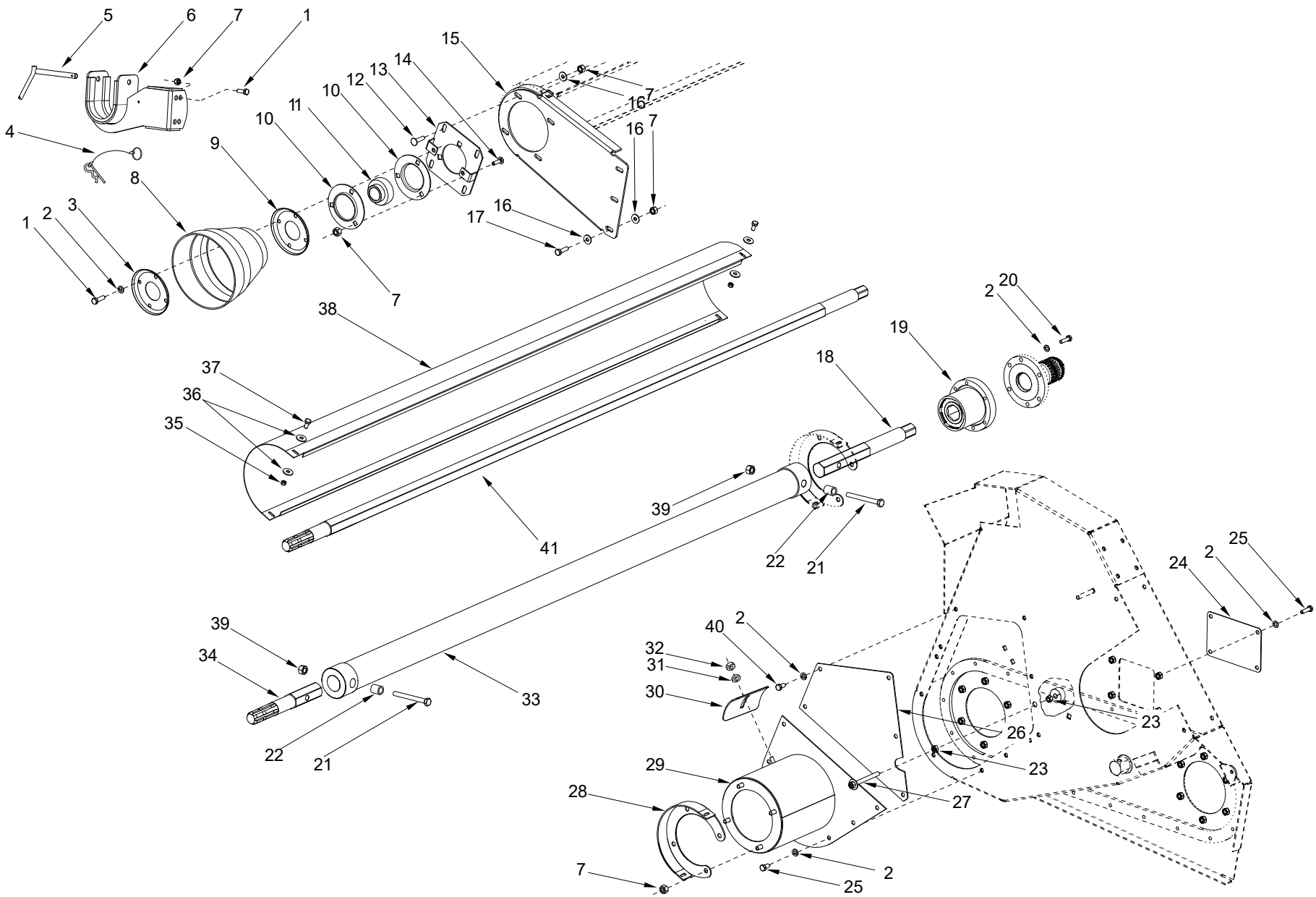


ILLUSTRATION N° 11: MAIN SHAFT

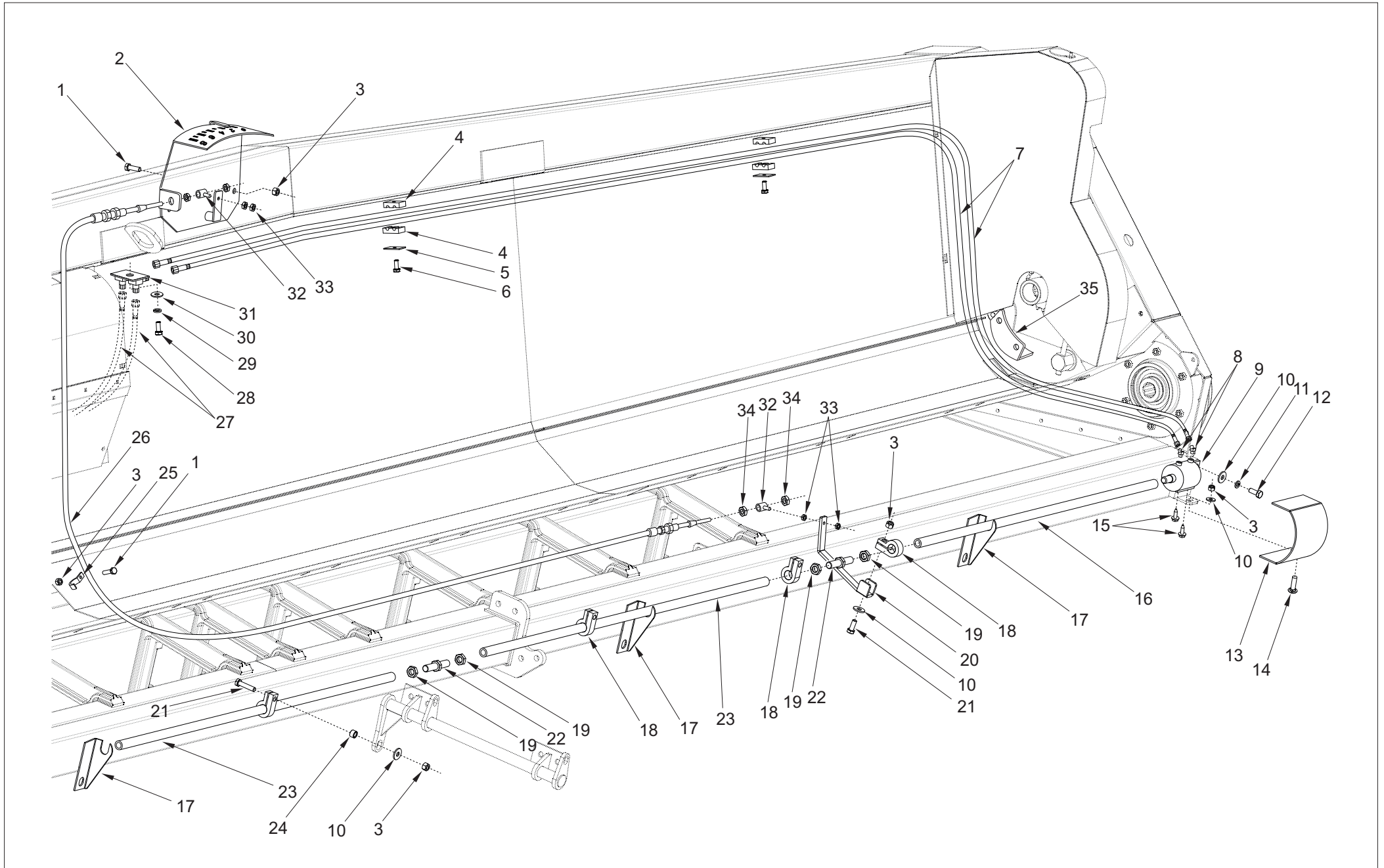


ILLUSTRATION N° 12: HYDRAULIC CIRCUIT

SPARE PARTS LISTING OF THE ILLUSTRATION N° 15

| POS. | DENOMINATION | SPARE N° | POS. | DENOMINATION | SPARE N° |
|------|---|-----------|------|--------------|----------|
| 1 | "Gathering chains" sticker | 30642-456 | | | |
| 2 | "Gathering chains: lubricate and control" sticker | 30642-461 | | | |
| 3 | "Stand for maintenance" sticker | 30642-465 | | | |
| 4 | "Point lock" sticker | 30642-466 | | | |
| 5 | "Logo Mainero 241 x 270 mm" sticker | 30642-763 | | | |
| 6 | "MAINERO" long. 720 mm sticker | 30642-760 | | | |
| 7 | "Attention remove hood" sticker | 30642-460 | | | |
| 8 | "Danger – Auger Arm" sticker | 30642-451 | | | |
| 9 | "MDD-100 model" sticker | 30642-807 | | | |
| 10 | "MAINERO" long. 580 mm sticker | 30642-759 | | | |
| 11 | "Oil the chain" sticker | 30642-314 | | | |
| 12 | "Disk clutch" sticker | 30642-450 | | | |
| 13 | "Danger - PTO Shaft" sticker | 30642-441 | | | |
| 14 | "Sling Hook" sticker | 30642-221 | | | |
| 15 | "Snap plates separation" sticker | 30642-680 | | | |
| 16 | "Hydraulic cylinder lock" sticker | 30642-442 | | | |
| 17 | "Do not climb" sticker | 30642-390 | | | |
| 18 | "Greaser" sticker | 30642-204 | | | |
| 19 | "Reed the Operator Manual" sticker | 30642-225 | | | |
| 20 | "Remove key – Stop engine" sticker | 30642-228 | | | |
| 21 | "Oil for gear box" sticker | 30642-459 | | | |
| 22 | "Do not retire protection – Roller chain drive" sticker | 30642-468 | | | |
| 23 | "Danger – Auger Stand" sticker | 30642-443 | | | |
| | | | | | |
| | | | | | |
| | | | | | |
| | | | | | |
| | | | | | |
| | | | | | |
| | | | | | |
| | | | | | |
| | | | | | |
| | | | | | |
| | | | | | |
| | | | | | |
| | | | | | |
| | | | | | |
| | | | | | |
| | | | | | |
| | | | | | |
| | | | | | |
| | | | | | |
| | | | | | |
| | | | | | |
| | | | | | |

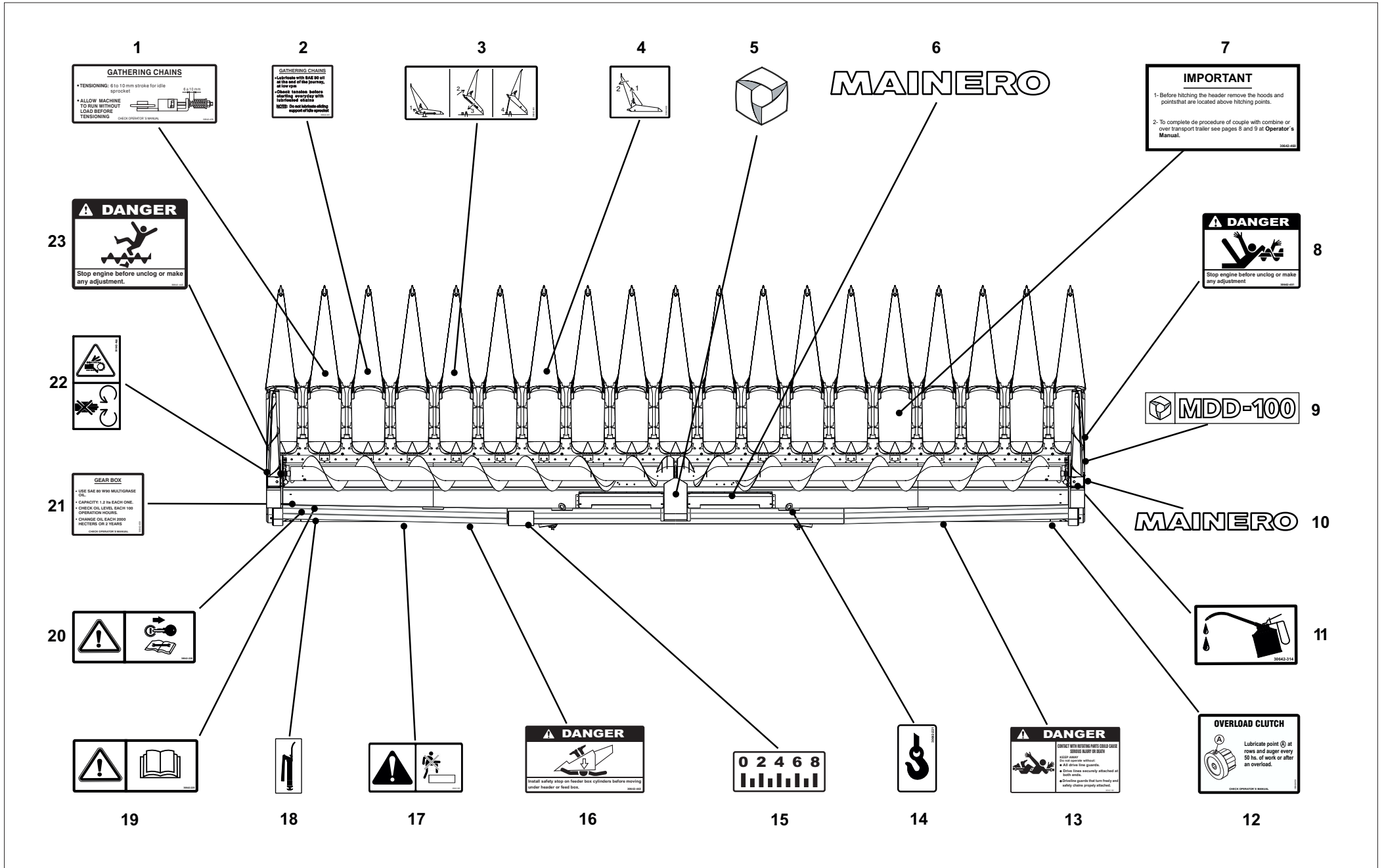


ILLUSTRATION N° 13: STICKERS